



DEVELOPING TRANSDISCIPLINARY RESEARCH CAPACITIES TO ADVANCE THE SE FIELD IN THE FACE OF MULTIDIMENSIONAL CRISES

PRACTICAL INFORMATION

1. TRAINING SCHOOL VENUE

The 9th EMES International Training School will be held in the Faculty of Economics and Management, University of Trento.

The address is Vigilio Inama Street 5, 38122 Trento.

On the following map you can see the distance between the University and the main train station.

2. HOW TO REACH TRENTO

By plane

If you are travelling to Trento by plane, the nearest airports are Bolzano, Verona, Bergamo, Venice and Milan. Usually, the best options are:

- o Verona "Valerio Catullo" ([Valerio Catullo airport](#)), is one of the nearest and has multiple companies that fly there (Lufthansa, Ryanair, Easyjet, etc.).

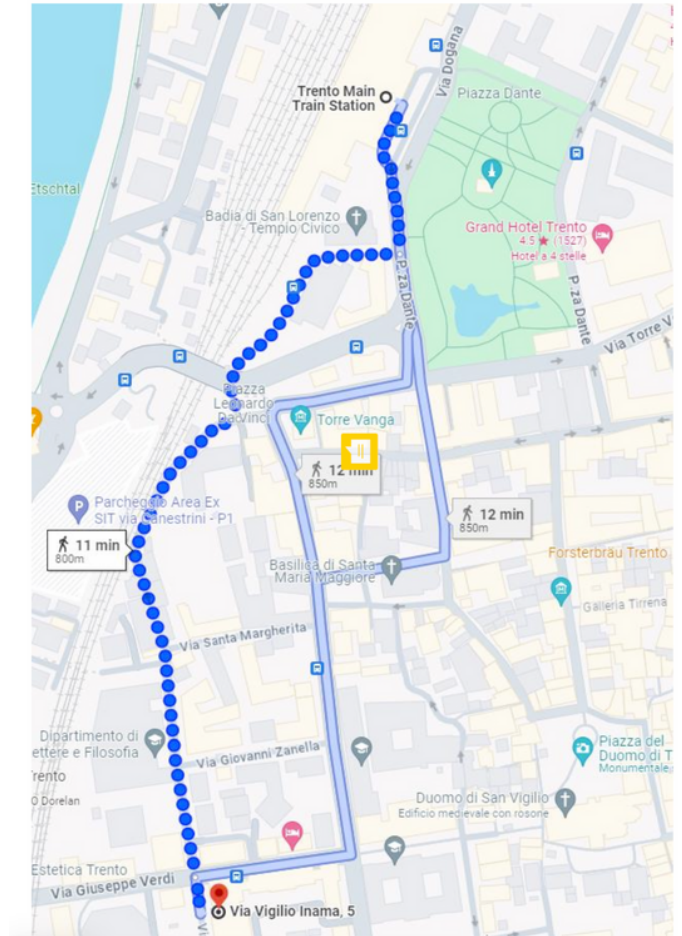
From the airport, you can take the shuttle bus service to the Verona railway station (every day, leaving every 20 minutes from 6.30 to 23.35).

From Verona's train station, you can reach Trento by train in 1 hour.

- o Milano/Bergamo ([Orio al Serio airport](#)), many low-cost companies fly there (Ryanair, Easyjet, etc.).

There is a shuttle bus service to the Bergamo railway station, leaving every 15 minutes from 6.05 to 00.15.

From Bergamo's train station, you can reach Trento by train in 3 hours (usually you have to change trains in Verona).



Flixbus offers direct bus service between Trento and Bergamo airport, it is the easiest option if the timing works.

Other plane options:

If you are traveling to Trento by plane, the nearest airports are Bolzano, Verona, Bergamo, Venice and Milan. Usually, the best options are:

- Bolzano "Dolomiti" ([ABD Airport](#)), is the nearest, but it does not have many flights. There is limited connection to the airport with public city buses. The closest bus stop is 600 mt from the airport (Line 10A or 10B).

With the bus, you can reach the train station of Bolzano and reach Trento by train in 45 minutes.

- Venice ([Marco Polo Airport](#))

There are buses to the Venezia-Santa Lucia and Mestre-Venezia railways stations. It takes 3 hours to come to Trento by train.

- Milano: Malpensa ([Malpensa Airport](#)) or Linate ([Linate Airport](#)).

There is a shuttle service to reach the center of Milan from both Malpensa and Linate airports. Buses leave every 20-30 minutes 24 hours a day.

It takes 3 hours to come to Trento by train once you get to the central station (you have to change trains in Verona).

Another option is to fly to Munich and take the train to Trento from there.

By train

To reach Trento by train, check the timetable on the [Trenitalia website](#). Please note that there are no train connections between 11.00 p.m. and 5.00 a.m.

If you are coming from Germany, check the "[Deutsche Bahn](#)" or "[OBB](#)" websites, they also have connections to Trento.

You can also use this website to check for [train connections](#).

By bus

You can reach Trento by bus using the newly added route from the main airports and stations to Trento by [Flixbus](#).

You can also try to check [Marinobus](#), the Italian company that connects cities in Italy and Europe every day.

3. ACCOMMODATION

All PhD participants will be staying at the **Ostello di Trento | Via Torre Vanga, 11, 38122| www.ostelloditrento.it**

The hostel is near the train station, so 8-10 minutes walk from the Faculty of Economics.

Accommodation costs in shared rooms will be provided by organizers.

For ECRs ONLY: Please remember that you need to take care of your own accommodation. We suggest the following options, with the first two ones being the most affordable:

San Bartolameo Residence of the University of Trento | Via della Malpensada, 140, 38122| tel: +39 0461 217490 | www.operauni.tn.it/alloggi/studentato-s-bartolameo

Rate: Single rooms from 39€/night.

Cooperative Villa S. Ignazio | Via delle Laste 22, 38121 | tel: +39 0461 238720 | interno@vsi.it | www.vsi.it

Rate: Single rooms from €39/night. This is a cooperative that looks more like a guesthouse than a hotel. It is about a 15-20 min walk from the city centre in a beautiful spot.

Ostello di Trento | Via Torre Vanga, 11, 38122 | tel: +39 0461 263484| info@ostelloditrento.it | www.ostelloditrento.it

Rate: Single room with bathroom starting from €42/night.

Dodici Mesi Rooms & Apartments | Via della Saluga, 3/B | tel: +39 0461 1830042 | info@12mesitrento.it | www.12mesitrento.it

Rate: Double room single-use with shared bathroom (with another double room single use) €60/night.

Please remember that you have to make your own reservations and that Trento is a little tourist city, so it is a good idea to book your accommodation as soon as possible.

4. ABOUT THE CITY OF TRENTO

You can find detailed information about major tourist and cultural attractions in www.trento.info and www.visittrentino.info

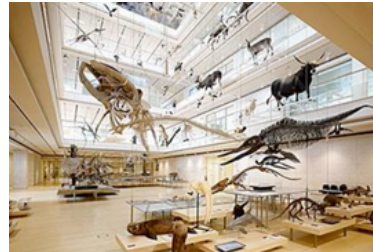
Some places of interest:



Piazza Duomo e il Duomo di Trento



Castello del Buonconsiglio



MUSE - Museo della Scienza



MART - Museo d'Arte Moderna (Rovereto)

Useful tips on how to spend the weekend and useful links can be found [here](#).

5. RESTAURANTS

Forst | www.forst-trento.it

Il Simposio | www.ilsimposio.net

L'orso grigio | www.orso-grigio.it

Il posto di Ste | www.ilpostodiste.com

6. PARTNERS