

# EMES

## Activity Report

# 2023/24

BUILDING KNOWLEDGE TOGETHER ON THE SE FIELD



EMES network

# EMES

## Activity Report

### 2023/24

BUILDING KNOWLEDGE TOGETHER ON THE SE FIELD

© EMES International Research Network asbl

HEC-University of Liege  
14, Rue Louvrex, Box 20  
4000 Liege (Belgium)

Tel: +34 651 54 74 26

Design: Culboks



**EMES** network

# Table of contents

**03**  
Glossary

**04**  
Introduction

What is EMES

**06**  
Key Events  
and Activities

9th EMES International  
Research Conference  
Frankfurt  
September 2023

9th EMES International  
Training School  
Trento  
June - July 2024

Other Activities

**13**  
Affinity Groups

Culture & Arts in Social  
Enterprise (CASE)

Central and East Europe  
and SE field (CEE & SE)

Exploring Rural and  
Regional Perspectives  
on Social and Solidarity  
Economy and Social  
Innovation (RUR-SE)

Education in  
Social Enterprise (SEEd)

Social Impact in  
the SE field (SISE)

**18**  
EMES Members

Individual members

Institutional members

EMES PhD Network

Governance

EMES Strategic Plan  
2023-2025

**24**  
General Assembly  
2023/24

**25**  
Data

Communication

Financial Overview

**27**  
Next gatherings  
& goals for 2025

## Glossary

### AICCON

Italian Association for the Promotion of the Culture of  
Co-operation and of Nonprofit (IT)

### ANSES:

African Network of Social  
Entrepreneurship Scholars

### CCS

Centre for Co-operative Studies (IE)

### CES-BE

Centre for Social Economy

### CES-PT

Centre for Social Studies

### CIRTES

Interdisciplinary Research Centre for Work, State and  
Society (BE)

### CNAM

National Conservatory of Arts and Crafts (FR)

### CSE

Centre for Social Entrepreneurship (DK)

### ECR

Early-Career Researcher

### EURICSE

European Research Institute on Cooperative and  
Social Enterprises (IT)

### GECES

Expert Group on Social Entrepreneurship of the  
European Commission

### GESES

Research Group of Social and Economic Studies of the  
Third Sector (ES)

### ICA-RSM

Institutions for Collective Action (NL)

### KASES

Korean Association for Social Economy Studies

### LEST

Labor Economics and Sociology Laboratory, Aix-Marseille  
University (FR)

### SE field

Social enterprise, social economy, solidarity economy, social  
entrepreneurship and social innovation

### SESAM

Norwegian centre for social entrepreneurship and social  
innovation (NOR)



# Introduction

Dear Member, dear Reader,

Please find herein the Activity Report of EMES covering the years 2023 and 2024. As we reflect on these two years, we are proud of the resilience and consolidation of our network amidst significant societal challenges, including political, social, and climate-related crises. Moreover, the EMES community continues to prove how high-quality research can be socially engaged as a way to stimulate social creativity. The will and drive of our members to address these challenges from their area of work constitutes an inspiration for the future.

A major way to consolidate the EMES mission is to hold events where established and emerging scholars, as well as PhDs can interact and learn from each other. We organized our two flagship events, which take place every other year, in the period covered in this report. Firstly In 2023, we hosted the **9<sup>th</sup> EMES International Conference on Social Enterprise** in Frankfurt (Germany), a meeting place for scholars worldwide involved in social enterprise, cooperative, and social innovation research across the globe. Secondly, in 2024, we returned to Trento (Italy) for the **9<sup>th</sup> EMES Training School**, where PhD students and early-career researchers (ECRs) engaged with senior EMES scholars and social enterprise stakeholders during a week. These encounters remain pivotal in empowering the next generation of scholars, continuing the legacy that EMES began in the late 1990s with its first European project on social enterprise.

Over the past two decades, EMES has built a robust body of knowledge on the SE field (social enterprise, social economy, solidarity economy, social entrepreneurship and social innovation), nurturing an international community of researchers. In 2023 and 2024, we expanded our network by launching new



Affinity Groups, including **RUR-SE**, dedicated to rural and regional perspectives, and another focusing on **Education in the SE field (SEEd)**. Our established **Culture and Arts and Social Enterprise (CASE) Affinity Group** also achieved significant milestones, further advancing collaboration and knowledge sharing. Other Affinity Groups, such as those dedicated to **social impact (SISE)**, continue to grow, fostering new collaborations that are highlighted in this activity report. Meanwhile, the **Central and East Europe and SE (CEE-SE) field group** has remained active, preparing exciting proposals for the 10<sup>th</sup> EMES conference. All the Affinity Groups are expected to be leading specific thematic lines related to their topics, except for the CEE-SE one, which is considered transversally present across all the lines.

At the wider SE ecosystem level, EMES continues to be part of the conversation in international fora. As Observer Member in the UN Task Force for the Social and Solidarity Economy (UNTFSE), EMES has celebrated the approval of the historic resolution on SSE in April 2023 and works closely with sister networks and agents to advance this crucial agenda.

We hope that you enjoy reading this report and thank you for being part of our community!

**Taco Brandsen**  
President  
(2022-2023)

**Francesca Petrella**  
President  
(2023-2028)

**Rocío Nogales-Muriel**  
Director



# What is EMES

EMES is a research network of university research centers and individual researchers on the “SE field”:

- ✓ Social enterprise
  - ✓ Social economy
  - ✓ Solidarity economy
- ✓ Social and solidarity economy
  - ✓ Social entrepreneurship
  - ✓ Social innovation

For over 20 years, EMES has worked with practitioners, policymakers and governments and other researchers to advance and consolidate the SE field worldwide.

We believe in the power of connecting established and emerging research institutions and individual researchers from around the world to advance the SE field. EMES seeks to connects its members’ interests, publications and relevant information, while exchanging opportunities for joint publications and research initiatives, visits and stays, etc.

EMES firmly believes in empowering the next generation of SE scholars and trainers.

# Much more than a network...

- ✓ Personal space on the EMES website with links to five publications.
  - ✓ Special fees for all events organised by EMES.
  - ✓ Possibility to publish in the EMES working paper series.
  - ✓ Participation in affinity groups of the network (there are currently five active!).
- ✓ Access to selected conference papers, workshop proceedings, videos, podcasts...
  - ✓ Promote your work through the EMES blog and the EMES Junior Expert Blog (EJEB).
  - ✓ Benefit from EMES’ social networks and news alerts to share your work.
  - ✓ For PhDs and early career researchers, access a community of peers to support you and your work.

# What we do

## EVENTS

EMES organizes and participates in events to disseminate research results in the field of SE and facilitate networking.

- ✓ International Research Conferences (+2500 participants)
- ✓ Seminars and webinars
- ✓ PhD Workshops

In addition, EMES members carry out a large number of events and initiatives in connection with major research projects.

## TRAINING AND EDUCATION

EMES develops training and education programs based on the network’s solid research and training experience. In collaboration with the EMES PhD Network we organize:

- ✓ International Summer Schools
- ✓ Formal university programs
- ✓ Exchange programs
- ✓ Mentoring program
- ✓ PhD thesis writing café

## RESEARCH

Since 2002, EMES has carried out major research projects in different areas:

- ✓ Personal and social services
- ✓ Social enterprise
- ✓ Social innovation
- ✓ Third sector
- ✓ Labor integration

## PUBLICATIONS

EMES publishes the results of its various research projects based on collaborative work:

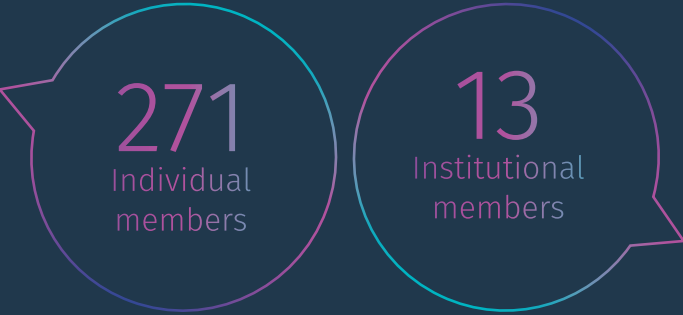
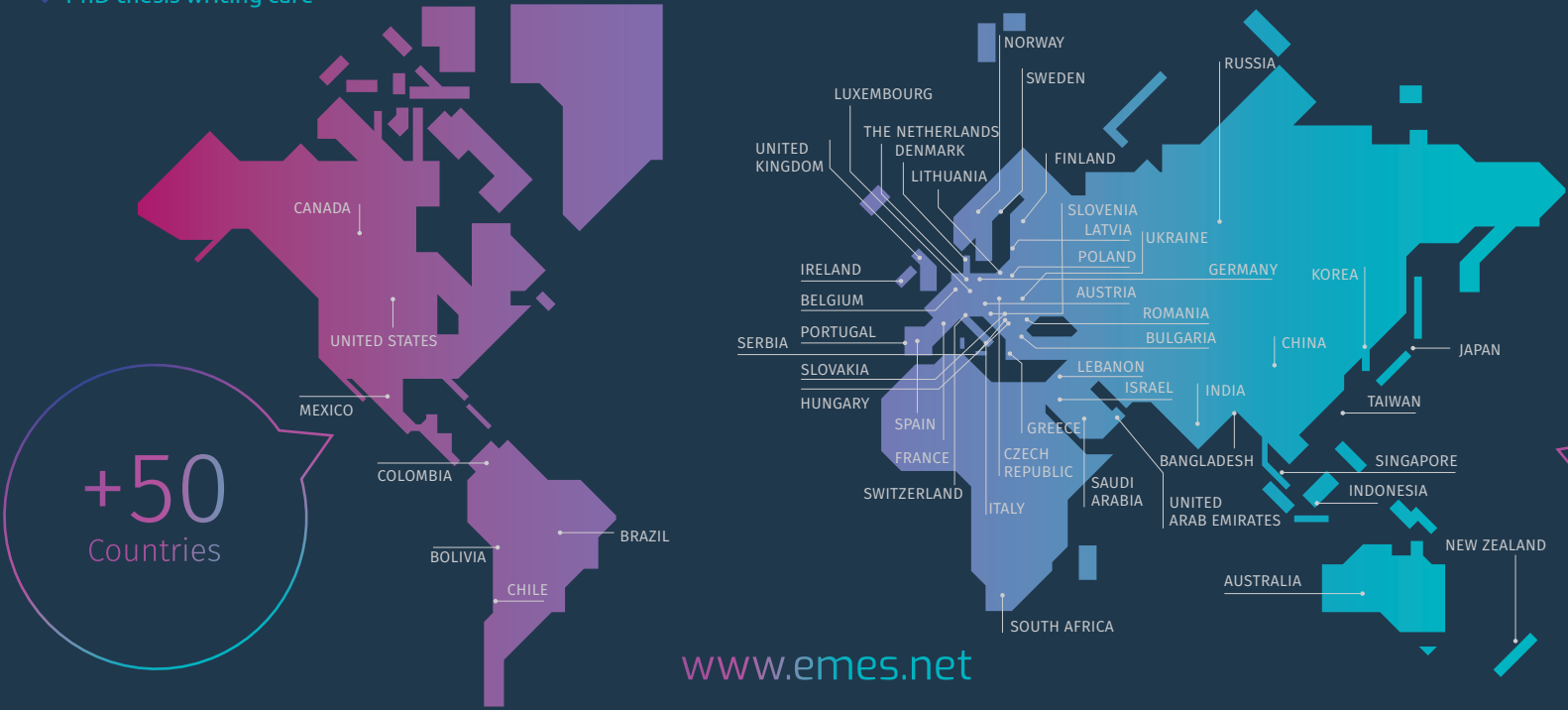
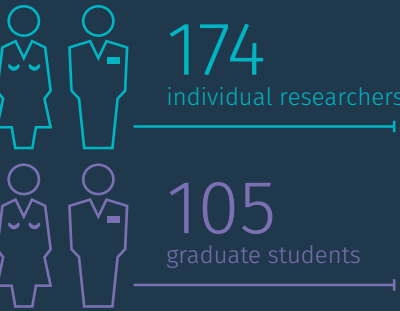
- ✓ 17 books (many in open access)
- ✓ 43 EMES working papers
- ✓ 265 conference papers
- ✓ Book presentations
- ✓ Thematic special issues & volumes

## AFFINITY GROUPS

Innovate and develop bottom-up initiatives to strengthen the sense of community.

Affinity groups are member-led, bottom-up initiatives that create community and gather members around specific research topics and interests in the SE field:

- ✓ CASE - Culture & the arts and SE
- ✓ CEESE -Central and East Europe and SE
- ✓ RUR-SE - Rural and regional perspectives on SE
- ✓ SEEd - SE & Education
- ✓ SISE - Social impact and SE



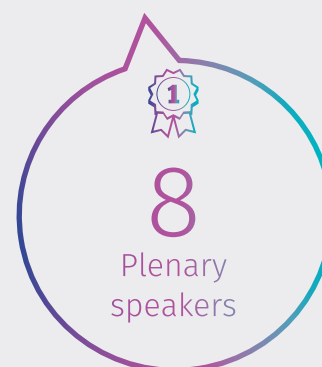
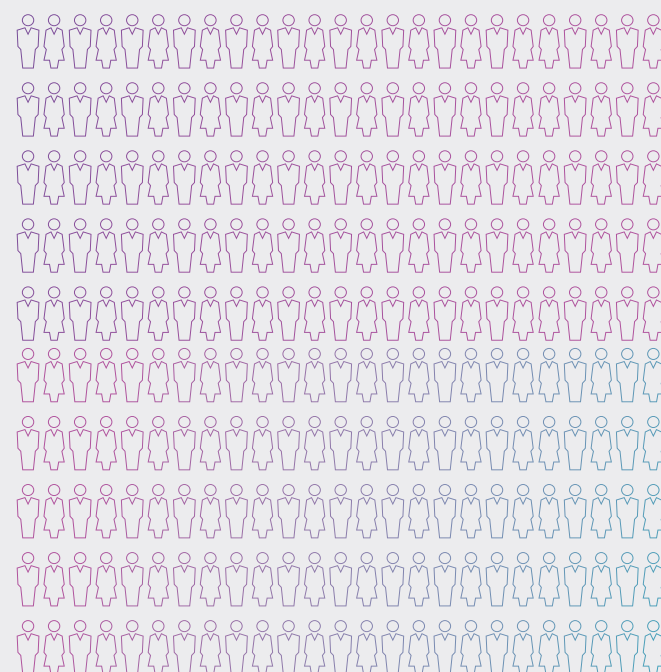
# 2023

## Key Events and Activities

### 9<sup>th</sup> EMES International Research Conference

Frankfurt (Germany)  
September 2023

We had...



#### TDF

Among many other topics, the Transdisciplinary Forum explored critical challenges and opportunities for Work Integration Social Enterprises (WISEs) and Social Enterprises (SEs), highlighting the need for targeted research, collaboration, and innovative strategies to enhance their societal contributions.



12  
Workshops



21  
Speakers

#### EMES Lifetime Achievement Award

To mark its 20th anniversary, EMES introduced a Lifetime Achievement Award to honor six distinguished professors—Carlo Borzaga, Jacques Defourny, Marguerite (Margie) Mendell, Victor Pestoff, Roger Spear and Isabel Vidal—for their outstanding contributions to the SE field and the EMES community. The moving ceremony celebrated the network's evolution as both a scientific and human community thriving through two decades of collective effort.



2  
UNTSSE Awards



2  
EMES best papers Awards

[Best papers](#)  
visit here

[Conference Report](#)  
visit here



14  
Thematic lines



1  
Transdisciplinary forum



3  
Conference committee  
(Local, International and Doctoral)



170  
Papers presented



64  
Parallel sessions held



5  
Panel sessions



2  
Plenary sessions



2  
Semi-plenary sessions



# 9<sup>th</sup> EMES International Research Conference Gallery





# 2024

## Key Events and Activities

### 9<sup>th</sup> EMES International Training School

Trento, June - July 2024

9

Editions of EMES Training Schools

3

Organizers

2

Supporters

+

1

Cooperative visit

88

Applications received



22

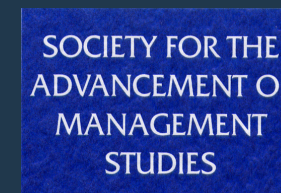
Faculty members



Developing transdisciplinary research capacities to advance the SE field in the face of multidimensional crises: *Exploring the different facets of the social and solidarity economy and social innovation*

The **9<sup>th</sup> EMES International Training School**, co-organized by **EMES**, **EURICSE**, and the **University of Trento**, brought together early-career researchers to explore the diverse fields of social enterprise, social economy, and social innovation. The main goal of the Training School was to advance aimed to advance knowledge and bridge research streams within the SE field amidst systemic transformations and multiple crises. This edition was dedicated to the memory of Professor Carlo Borzaga—a world-renowned scholar, President Emeritus and founder of EURICSE, and co-founder of EMES—who passed away a few months prior.

The 9<sup>th</sup> EMES Training School, co-organized by EMES, EURICSE, and the University of Trento was supported by the **European Social Innovation Campus (ESIC)** project under the Erasmus Plus Blueprint program, this edition also benefitted from the **Society for the Advancement of Management (SAMS)**, which helps sponsor early-career researchers.



54

PhDs and ECRs assisted



9<sup>th</sup> EMES International Training School  
Gallery





## Other Activities / 2023



### Study visit in Madrid from the Danish Cooperative Employers' Organisation

On April 18, 2023, the United Nations General Assembly adopted a resolution promoting the Social and Solidarity Economy (SSE) for sustainable development, recognizing its potential in achieving the Sustainable Development Goals. In this context, EMES organized a study visit to Madrid focused on building a supportive ecosystem for cooperative entrepreneurship, where representatives from the Danish Cooperative Employers' Organisation (Kooperationen) explored cooperative experiences in various neighborhoods, including Lavapiés and Ventilla. This visit aimed to inspire participants with Madrid's successful cooperative models, fostering new collaborations and advancing SSE values globally.



### EMES at the United Nations Task Force on Social and Solidarity Economy

As part of the United Nations Task Force on Social and Solidarity Economy (UNTFSSSE), EMES hosted the promotion of The Encyclopedia of the Social and Solidarity Economy and the launch of the first UNTFSSSE Knowledge Hub Award during our biennial conference. This event aligns with the 66th plenary meeting of the United Nations General Assembly, where the resolution "Promoting the Social and Solidarity Economy for Sustainable Development" was adopted, officially defining SSE and recognizing its potential to contribute to the achievement of the SDGs. Marthe Nyssens, Vice-President of EMES, highlighted the importance of SSE in driving innovation and fostering systemic change, positioning SSE as a key force in evolving sustainable production and consumption patterns.



### Strengthening EMES PhD Networks: A Dialogue with EURICSE

In December 2024, our EMES PhD representative, Juliana Rodriguez, who holds a seat on the EMES Board, gathered online with the EURICSE network—an EMES longstanding institutional member—and their team to discuss the experience of being part of the EMES PhD community. It was a fruitful meeting that facilitated the sharing of experiences and knowledge. The discussion highlighted the importance of our vibrant and actively engaged PhD community, particularly the biannual PhD training school, which plays a key role in fostering academic collaboration and development within the network.



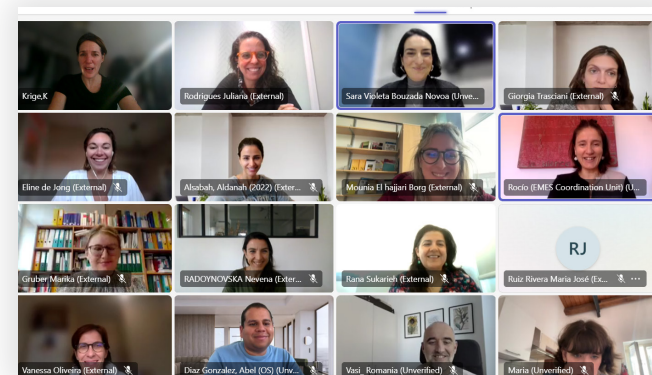
## Other Activities / 2024



### Déclic Day

EMES and the Brussels-based Déclic-en-Perspectives joined forces again to co-organize this unique action to bring the SE closer to the youngsters.

The first “Déclic Day” was a great success in 2023, introducing 19 young people in Brussels to the social economy and social entrepreneurship through hands-on collaboration. Building on this momentum, the second edition took place in 2024 on a February 24<sup>th</sup>, at the AJC festival in Gare du Nord, bringing together over 20 enthusiastic participants for a day of inspiration, learning, and project creation. EMES was thrilled to share its 20 years of expertise in the field, made possible by the invaluable support of the Bernheim Foundation, which continues to enable innovative approaches to achieving social goals.



### Mentoring Webinars

On October 2024, the EMES PhD Network launched its pilot Mentoring Program, designed to connect PhD candidates (mentees) with ECRs (mentors) for guidance and support in their academic and career development. With 18 pairs of mentees and mentors from 24 countries, the program offers a safe space for reflection, helping participants navigate both academic and personal challenges. Led by members of the EMES PhD Committee and supported by senior scholars, the program aims to foster collaboration, connection, and mutual growth within the SE research community.



### EMES Representation

Francesca Petrella, the newly elected president in 2023, has been appointed as a member of the renewed Commission Expert Group on Social Economy and Social Enterprises (GECES), led by DG GROW and DG EMPL. The first meeting took place on October 22<sup>nd</sup> at the EU Commission in Brussels.

She was also invited as a keynote speaker at the 18th Scientific Colloquium on Social Enterprise, held in Perugia, Italy, on October 18<sup>th</sup> and 19<sup>th</sup>, 2024. The event was organized by Iris Network, the Italian network on social enterprises, in collaboration with the Department of Economics of the University of Perugia and the Perugia Foundation. This edition focused on the role of social enterprises in Europe, aligning with the Social Economy Action Plan adopted by the EU in December 2021. Her presentation addressed the roots and perspectives of the social economy in Europe.



### Goodbye Carlo

In March 2024 Prof. Carlo Borzaga, a founding member of EMES and renowned expert in the social economy, passed away, at age 75. A pioneer in the field, he shaped significant Italian laws on social cooperation, authored groundbreaking studies on social enterprises, in Europe and worldwide, and bridged academia with practitioners and policymakers. His immense contributions to EMES, his students, and the broader SE community will be remembered with a great gratitude.

We created a “Wall of Condolences.” so the EMES community could share our condolences and thoughts with the rest of the EMES community. [Visit it here.](#)



# Announcing the Launch of the Ibero-American Social Enterprise Open Portal in Spanish and Portuguese

We are excited to announce the launch of the **Ibero-American Social Enterprise Open Portal** in Spanish “**Portal Abierto de la Empresa Social**” (PAES), a groundbreaking initiative designed to support the growing community of social enterprise stakeholders across Ibero-America. PAES is a collective pilot project bringing together individuals, communities, and organizations with a shared interest in the diverse and dynamic field of social enterprise across Ibero-American regions. This innovative portal will provide users with access to a rich array of resources in Spanish and Portuguese, including research articles, reports, case studies, and practical tools, catering to academics, professionals, and policymakers alike.

The PAES initiative is the result of a collaboration between the **EMES International Research Network** and various Ibero-American networks and stakeholders in social enterprise. The pilot phase is financed by the Spanish Ministry of Labour and the Social Economy. This strategic partnership aims to foster greater knowledge sharing and visibility of social enterprise initiatives throughout the region. Furthermore, to ensure inclusivity, PAES will offer its resources, communication, and participation opportunities in Spanish, Portuguese, and other Ibero-American languages.

PAES will be complemented by a series of **webinars** (*conversatorios*) set to take place throughout 2024 and 2025. These webinars will provide an important platform for in-depth discussions, knowledge exchange, and the exploration of emerging trends in the social enterprise landscape. The webinars will cover a wide range of topics, from research findings to practical case studies, and are open to all who are interested in expanding their understanding of social enterprise in the Ibero-American context.

Stay tuned for more updates and join us in celebrating the potential of social enterprise to drive positive social impact in Ibero-America.



Visit the website: <https://www.portalabiertodelaempresasocial.org/>





# Affinity Groups

1



## Culture & Arts in Social Enterprise (CASE)

### Membership and Geographic Diversity

The **'Culture and Arts in SE' (CASE)** affinity group emerged from the **EMES COST Action** in 2019, meeting for the first time in Malta. It currently has **around 30 members** from countries including Croatia, Denmark, Finland, France, Portugal, Spain, Sweden, and the UK. The group consists of both **artists and researchers**. They explore the artistic and cultural dimensions of **SE** focusing on forms of value beyond the economic, as well as strategies for involving stakeholders in governance. Their work blends traditional research methods with innovative **art-based approaches** to explore these emerging research areas.

### Key Milestones

In **September 2023**, CASE members met in person at the **9<sup>th</sup> EMES International Research Conference in Frankfurt, Germany**. This event marked the first time SE researchers collaborated to create a **theatrical-poetic composition** titled **"CASE Constellations"**, which combined texts in five languages (English, Finnish, Maltese, Portuguese, and Spanish). The performance, presented at the conference, will be available on the conference website.

A major milestone in **2024** was the publication of a **special issue** in the *Social Enterprise Journal* on **'Unlocking the Transformative Potential of Culture and the Arts from Social Enterprises and Third-Sector Organizations'**. This issue featured articles developed during our meetings, covering topics like **social innovation**, **cultural co-production**, and **artisanal enterprise** across Europe and Africa.

They also surveyed members to identify critical research topics and methodologies for the group.

### Looking Ahead: Plans for 2024 and Beyond

In **2023 and 2024**, online meetings focused on specific themes and methodologies. **Linda Lundgaard Andersen** led a workshop on **"sensory-saturated" writing**, which explored new ways to enhance ethnographic descriptions and data analysis. Additionally, the group participated in inter-group meetings organized by the **EMES Coordination Unit** to promote cross-learning and synergies across the five affinity groups.

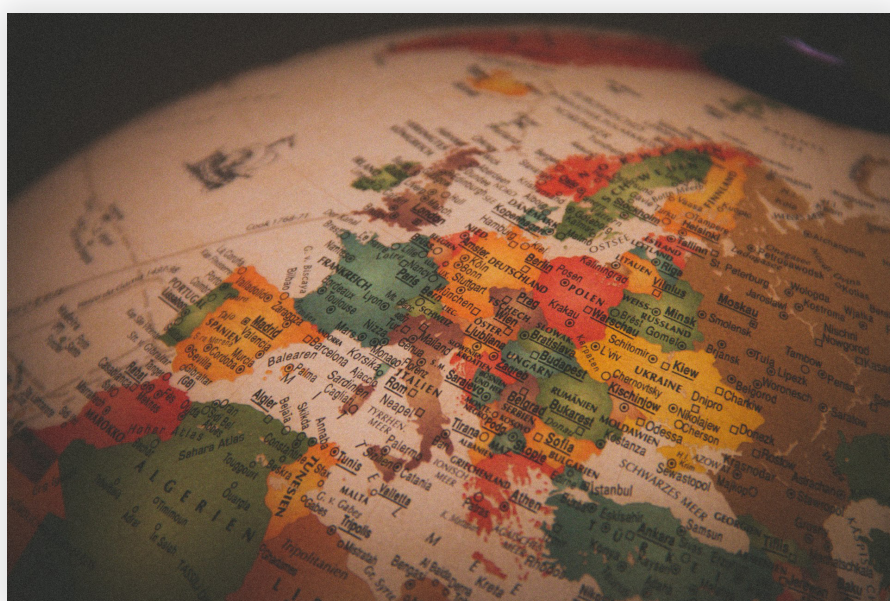
For **2025**, this affinity group plan to hold more regular meetings and prepare for the **10<sup>th</sup> EMES Conference**, where our group will lead a thematic track on **'Fostering SE in Culture and the Arts'**. The aim is to design another **collective activity** similar to the one in 2023.

It will also continue collaborating with key institutions, including the **IN-SITU project** led by **Nancy Duxbury**, the **Reset! European Network** on independent cultural institutions, and the **EMCCINNO Horizon project**, coordinated by **Francesca Petrella**, EMES President and CASE member.



# Affinity Groups

2



## Central and East Europe and SE field (CEE & SE)

The CEE & SE Affinity Group focuses on exploring the unique trajectories and sustainability of social enterprises (SEs) in Central and Eastern Europe (CEE) and the Balkans. Its key objectives include:

### Key Themes and Objectives

- Examining the development of SEs in CEE countries post-1989 within the context of socialism/communism legacies.
- Investigating the current condition of SEs in relation to socio-political contexts in the region.
- Analyzing the regional and local factors that drive or hinder the growth of SEs.

The group emphasizes the specific regional dynamics of SEs rather than viewing them as concepts transplanted from Western democracies.

### Membership and Geographic Diversity

The group brings together researchers from diverse institutions across Hungary, Slovakia, Czech Republic, Poland, and Croatia. Members represent a range of career stages and disciplines, fostering collaboration and interdisciplinary perspectives on SE research.

### Major Milestones and Achievements

- 9th EMES Conference Kick-off Meeting: The group was officially launched at the 9th EMES International Research Conference in Frankfurt, where a panel discussed the condition of SEs in CEE post-COVID-19.
- Collaborative Research Grant: Prof. Anna Ciepielewska-Kowalik and Dr. Zuzana Polackova secured a joint Polish-Slovak project for 2025–

2026 under an agreement between the Polish and Slovak Academies of Sciences. This project will investigate the local contexts, legal frameworks, and sustainability of SEs and their interconnections with social/public innovations.

### Looking Ahead: Plans for 2024 and Beyond

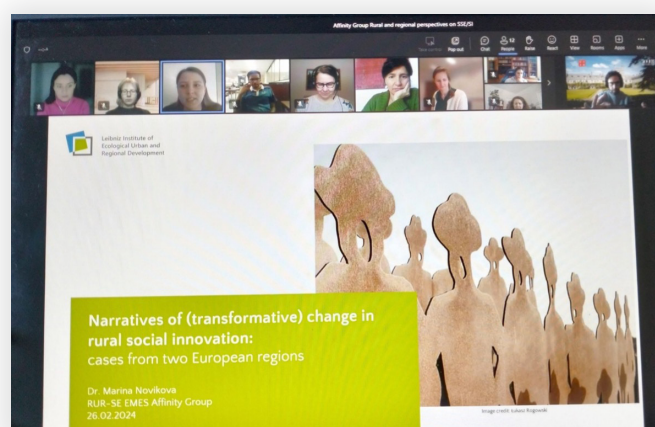
The group has ambitious plans for 2025, including:

- Organizing a joint panel on SEs in CEE countries at the 10<sup>th</sup> EMES International Research Conference in November.
- Submitting proposals for Multilateral Academic Projects (MAPS) within the Swiss contribution framework.

By fostering regional collaborations and producing impactful research, the CEE & SE Affinity Group is poised to advance understanding and practice in the social enterprise field across Central and Eastern Europe and the Balkans.

# Affinity Groups

3.



# Exploring Rural and Regional Perspectives on Social and Solidarity Economy and Social Innovation (RUR-SE)

The Rural and Regional Perspectives on Social and Solidarity Economy and Social Innovation (RUR-SE) Affinity Group was established in November 2023 as part of the EMES International Research Network. This group highlights EMES' commitment to advancing research and creating impact through initiatives focused on Social and Solidarity Economy (SSE) and Social Innovation (SI).



## Key Themes and Objectives

RUR-SE is dedicated to exploring the role of SSE and SI in fostering rural and regional development. The group's primary objectives include investigating geographically sensitive research in SSE and SI, with a focus on rural and regional contexts. Its members are working across a variety of disciplines, including sociology, geography, economics, political science, forestry, business, food systems, and agriculture, to deepen understanding of SSE and SI's impact on rural areas. Additionally, the group emphasizes co-creating knowledge with stakeholders, particularly practitioners, and aims to provide evidence-based research for policymakers.

The group also aims to explore SSE and SI initiatives in sectors with potential for rural development, such as sustainable tourism, agriculture, social farming, renewable energy, and youth services. Specific focus is also given to studies targeting groups within rural areas, including women, youth, elders, and migrants. Another important goal is to create synergies with rural networks in the SSE and SI fields.

## Membership and Geographic Diversity

RUR-SE brings together over 20 researchers from institutions across Europe, including Ireland, Spain, Finland, Italy, Germany, Hungary, Greece, and the Netherlands. Additionally, the group includes researchers based in India and Australia, creating a diverse and global network. The members range from PhD candidates to established professors, with a broad spectrum of expertise in various research fields, encouraging collaboration and knowledge exchange.

## Major Milestones and Achievements

Since its formation, the RUR-SE group has hosted 13 regular monthly meetings, focusing on knowledge exchange and peer feedback on ongoing research projects. These meetings follow a webinar format, where presenters share abstracts in advance, allowing group members to prepare meaningful feedback. In addition to research exchange, the group dedicates time to discuss calls, proposals, and collaborative activities.

The group is currently working on several initiatives, including a collaborative systematic literature review, proposals for research projects, and the development of a thematic line for the 2025 EMES International Conference. Furthermore, they are actively involved in disseminating research to the general public and developing transdisciplinary forums to engage with practitioners and policymakers.

## Looking Ahead: Plans for 2024 and Beyond

Led by EMES Board member Lucas Olmedo Osuna (University of Almeria, Spain), along with Marina Novikova (Leibniz Institute for Urban and Regional Ecological Development, Germany), Mary O'Shaughnessy (University College Cork, Ireland), and Marta Solórzano (UNED, Spain), the RUR-SE group is poised to continue fostering international collaboration, advancing research, and strengthening rural and regional resilience worldwide. Their work remains central to understanding the vital role of SSE and SI in rural and regional development.



# Affinity Groups

4



## Education in Social Enterprise (SEEd)

The SEEd affinity group is an exciting opportunity for scholars working in the field of SE education and training to connect, collaborate, and shape the future of this important area.

### Membership and Geographic Diversity

The SEEd affinity group officially launched in March 2024 with an ambitious goal: to bring together EMES members passionate about education and training in social enterprise, social entrepreneurship, social economy, and social innovation (SE). Since its inception, the group has grown to include around 20 researchers from across Europe, representing countries such as France, Denmark, the UK, Italy, Germany, Belgium, Sweden, Romania, the Netherlands, and Spain. This diverse and engaged community has laid a strong foundation for future collaboration and knowledge-sharing in the field of SE education.

### Key Milestones

In just a few months, the SEEd group has already made significant strides. They hosted three dynamic meetings where EMES members and guest speakers shared their expertise and ongoing research in SE education. These sessions have sparked exciting discussions and fostered connections among researchers from various regions.

One of the highlights was a presentation by **Prof. Dr. Thomas Lyons** from the University of Tennessee at Chattanooga, USA. He gave an exclusive preview of the fourth edition of *Understanding Social Entrepreneurship: The Relentless Pursuit of Mission in an Ever-Changing World*, co-authored with **Jill Kickul**. The lively discussion that followed centered around the evolution of the book, the challenges in SE education, and future directions for the field. EMES members provided valuable feedback and suggestions for the upcoming edition.

Another standout moment came from **Dr. Millán Díaz Fonseca** of the University of Zaragoza, Spain. He introduced the **ERASMUS+ “project EEE3S+”**, an exciting initiative mapping university-level SE programs in Europe and Latin America. This project is the first of its kind in these regions, and it has garnered a lot of interest. Attendees were eager to contribute by sharing details about their own SE courses and awaited the final map and insights that will emerge from this effort.

### Looking Ahead: Plans for 2024 and Beyond

The SEEd group has ambitious goals for the coming year. Here are the three key priorities:

- **Grow our community:** Aim is to attract more EMES members and strengthen collaborations within the group. Expanding our network will create new opportunities for knowledge-sharing and cross-border partnerships.
- **Expand our reach:** We are focused on welcoming external scholars, particularly those from the Global South, into both the SEEd group. Greater global representation will enhance the diversity of perspectives within our work.
- **Shape the future of SE education:** Our group is preparing to play a central role in organizing the **next Forum on Education and Training on SE** at the **10<sup>th</sup> EMES Conference** in November 2025 in the Netherlands. This event will serve as a platform to discuss key issues and trends in SE education and training.



# Affinity Groups

3



## Social Impact in the SE field (SISE)

The Affinity Group “Social Impact in the SE field (SISE)” has achieved remarkable progress in 2024, driven by its collaborative spirit and innovative initiatives aimed at enhancing research and practice in the SE field.

### Membership and Geographic Diversity

The group is spearheaded by committed members, including Aundrone Urmanaviciene, Marek Ćwiklicki, and Andrea Bassi. Together, they have established a global network of contributors. Last year, the group engaged with over 20 countries, emphasizing its commitment to fostering diverse and inclusive approaches to addressing SE challenges on a global scale.

### Key Milestones

#### ■ Special Issue for the *Social Enterprise Journal*

A significant milestone in 2024 was the preparation of a call for papers for a special issue of the *Social Enterprise Journal*. This effort, led by group members, attracted approximately 20 papers from researchers spanning countries such as Australia, Belgium, Brazil, Canada, Croatia, Ecuador, France, Indonesia, Italy, Morocco, Netherlands, Portugal, and Spain. The submissions reflect diverse scientific disciplines, perspectives, and methodologies, ensuring a well-rounded contribution to the journal. The special issue, set to be published in 2025, is expected to significantly enrich the growing body of knowledge on social impact within the field.

#### ■ Project Proposal Submission

Another noteworthy accomplishment was the development and submission of the project proposal titled “*Social Impact Measurement for Sustainable Transformation*” under the COST Action framework. This ambitious project attracted the participation of 19 EMES members from countries including Poland, Croatia, Lithuania, Romania, Estonia,

Slovakia, Malta, Canada, Italy, Latvia, South Africa, India, USA, and the Netherlands. The project is designed to enhance the understanding and application of social impact measurement to foster sustainable transformation. It aims to engage a broad spectrum of stakeholders—academics, early-career researchers, public sector staff, civil society, and the business community—promoting knowledge dissemination and practical applications. Results of the proposal are anticipated by May 20, 2025.

#### ■ Monograph Development

The group has also initiated the development of two monographs. The first monograph will focus on social entrepreneurship and innovation, while the second will examine civil society and the third sector from an interdisciplinary lens. These monographs are top priorities for the 2025 and aim to provide impactful academic contributions in these critical areas.

### Looking Ahead: Plans for 2024 and Beyond

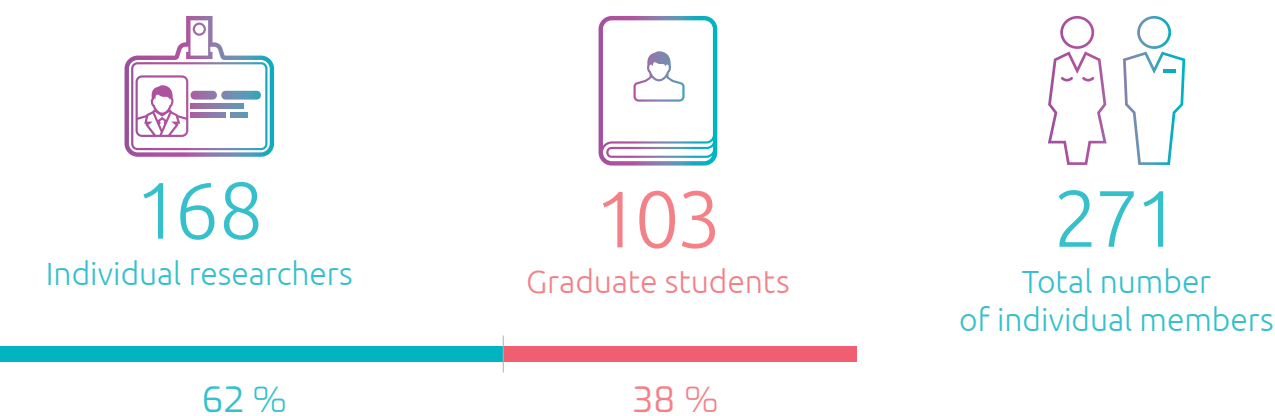
The accomplishments provide a robust foundation for future initiatives. With a focus on collaborative projects, diverse publications, and meaningful research, this Affinity Group remains a driving force in advancing sustainable transformation and engaging the global community in addressing pressing challenges within the field.

# Beyond Membership: The Value We Create Together

## EMES Members

We believe in the power of connecting established research institutions and individual researchers around the world to advance the SE fields. EMES seeks to intercommunicate each other's interests, publications and related information while exchanging opportunities for joint publications and research initiatives.

## Members in Figures (by 2024)



**1 Exclusive Event Access:**

Participate in EMES-organized academic events with reduced registration fees. This includes the 10<sup>th</sup> EMES Conference in Fall 2025 and the upcoming 10th EMES Training School in 2026.

**2 Affinity Group Engagement:**

Join collaborative groups tailored to members' research interests, such as:

- Culture & Arts in the SE field (CASE)
- Central and Eastern Europe and the SE field (CEESE)
- Rural and Regional Perspectives (RUR-SE)
- Education in the SE field (SEEd)
- Social impact in the SE field (SISE)

**3 Access to Research Outputs:**

Explore results from major international comparative research projects, such as international projects (EMCCINNO, WISESHIFT, ICSEM...) publications, stakeholder briefs...

**4 EMES Blog & Social Media Exposure:**

Showcase your work or events on the EMES blog and amplify visibility through our social media channels and news alerts.

**5 Enhanced Visibility & Networking:**

Your profile will be featured on the EMES website, which receives over 23,000 annual visitors, creating opportunities for meaningful connections.

Ready to join us and create meaningful collaborations? Find out more about becoming a member and join the biggest research community on social enterprise. We look forward to your continued involvement and the opportunity to work together toward a brighter future for the SE!

Information  
visit here



# Institutional Members

EMES institutional membership offers a range of benefits to support research institutions engaged in the SE field. Here are some key advantages for institutional members:

## 1. Researcher Engagement:

Institutional membership allows researchers or PhD students from your institution to create individual profiles linked to your institution's webpage on the EMES website, which attracts over 30,000 visits annually.

## 2. Research Opportunities:

Members gain access to exclusive calls for research proposals and collaborative project opportunities with other EMES members. EMES also offers tailored research seminars and meetings to support institutional goals.

## 3. Event Hosting and Participation:

Institutional members are prioritized as hosts for flagship EMES events like the research conference and training school. They also enjoy discounted event fees, including one free registration for major conferences, with additional member-rate discounts for their researchers and PhD students.

## 4. Visibility and Networking:

Promoting research and activities through EMES blogs, news alerts, and social media channels. Connecting communication staff with the EMES Coordination Unit to enhance the institution's visibility.

## 5. Strategic Governance Role:

Institutional members play a vital role in EMES governance, holding two-thirds of the voting power in the General Assembly and occupying eight of the thirteen Board of Directors' seats.

The EMES network is proud to collaborate with its 14 institutional members:

### Belgium:

Centre Interdisciplinaire de Recherche Travail, État et Société  
**CIRTES** (UCLouvain)

The Centre for Social Economy **CES**  
(Université de Liège)



### Denmark:

Centre for Social Entrepreneurship  
**CSE** (Roskilde University)



### France:

The Institute of Labour Economics and Industrial Sociology **LEST**  
(Aix-Marseille University & CNRS)

The National Conservatory of Arts and Crafts **CNAM**



### Ireland:

The Centre for Co-operative Studies (University College Cork)



### Italy:

European Research Institute on Cooperative and Social Enterprises **EURICSE**



### Portugal:

The Centre for Social Studies of the University of Coimbra **CES**  
(University of Coimbra)



### Spain:

The Research Group of Social and Economic Studies of the Third Sector **GESES**



### Sweden:

Södertörn University



SÖDERTÖRN UNIVERSITY | STOCKHOLM  
sh.se

### Netherlands:

Institutions for Collective Action  
ICA-RSM (Erasmus University)



### Norway:

Norwegian centre for social entrepreneurship and social innovation **SESAM** (University of South-Eastern Norway)



### Korea:

Korean Association for Social Economy Studies **KASES**



EMES welcomes  
university centers and  
research institutes  
interested in its  
institutional membership  
to jointly advance SE  
research.

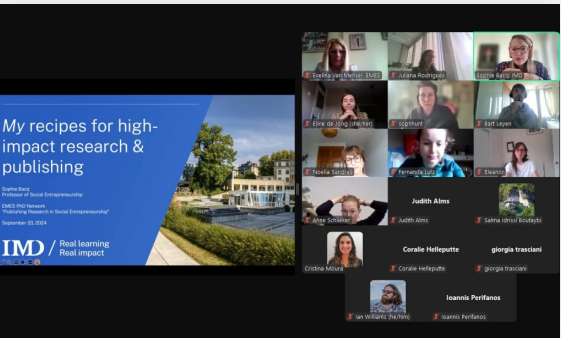
# EMES PhD Network

Through 2023 and 2024, the EMES PhD Network continued to thrive as a vibrant and collaborative community of researchers. Here’s an overview of key activities.

## 2024 PhD Network Webinar Series:

The topics and sessions are proposed and co-organized bimonthly by a pair of PhDs students.

Date	Title	Guests	Organizers/Hosts
20 <sup>th</sup> Feb	Navigating the SE Field: Overview and Trending Topics	Benjamin Huybrecht & Lucas Olmedo	Alejandra M. Franco (Spain) and Juliana Rodrigues (Finland & Brazil)
24 <sup>th</sup> Apr	Quantitative Research in the SE Field	Niels Bosma	Bart Leyen (Belgium) and Evelina Van Mensel (Bulgaria & Belgium)
13 <sup>th</sup> Jun	Qualitative Research in the SE Field	Swati Banerjee & Lars Hulgård	Kardelen Dilara Cazgir (Germany) & Pushkar Aditya (India)
20 <sup>th</sup> Sep	Publishing Research in Social Entrepreneurship	Sophie Bacq	Eline de Jong (The Netherlands) and Evelina Van Mensel (Bulgaria & Belgium)
22 <sup>nd</sup> Nov	Connecting the Dots: Scientific Insights for Real-World Applications in Social Enterprises	Giulia Galera, Sílvia Ferreira & Pedro Reynolds-Cuellar	Vanessa Oliveira (Portugal) and Tiffany Laursen (USA)



## Mentoring Program:

Launching this pilot program was the highlight of year. PhD network co-designed this program through multiple benchmarking and consultations with PhD committee members. In this process, a PhD Mentoring Committee was created, including people of different profiles besides PhD (ECR and faculty members), to counteract critical points of the program development as the pairing process

### Facilitators

Violeta Bouzada (Spain), Vanessa Oliveira (Portugal), Aldanah Alsabah (UK), Elena Gospodinova (Bulgaria).



### EMES PhD Representative

Juliana Rodrigues

### PhD Community Facilitators:

Violeta Bouzada, Alejandra Millán-Franco, Aldanah Alsabah, Vanessa Oliveira, Nerea Ibad Itoiz, Ian Williams, Pushkar Aditya, Judith Alms, Bart Leyen, and Evelina Van Mensel.

### PhD Committee members:

Devleena Dey (India); Eline de Jong (Netherlands), Emma Forrest (UK), Emma Yang (UK), Giulia Guazzaroni (Italy), Ivan Steenkamp (South Africa), Kardelen Dilara Cazgir (Germany), Maria Samareva (Italy), Norma Madrid (Germany and Spain), Qiyu Malbury Huang (China) and Tiffany Laursen (USA).

## Blog:

Active members of the PhD network reactivated **the blog**, changed to a platform to showcase activities larger than a blog with regular posts. Ian G. Williams (USA) and Nerea Abad Itoiz (Spain) are the blog editors, coordinating the publications of the contributions from other PhD members.

## Community Meetings:

These are meetings dedicated to strengthening the governance and the ties within the network, organized twice a year.

## Thesis Writing Café:

The Thesis Writing Café sessions were held every Friday afternoon, co-organized by Bart Leyen (Belgium) and Evelina Van Mensel (Bulgaria & Belgium). From December 2023 to June 2024, a total of 29 sessions took place, with attendance occasionally reaching up to six participants.

## Communication and Social Media:

PhD main communication channels with the network are via **WhatsApp group**; **LinkedIn group**, and **Facebook group**, in that order. Occasionally, they send emails specific to the PhD Community.



# EMES PhD Exchanges: Inspiring Journeys of Research, Connection, and Transformation



**Alejandra Millan Franco** is in the final phase of her PhD in Business Organization at Universitat Politècnica de València (UPV), researching interorganizational collaboration within Spain's social and solidarity economy. Rooted in her Colombian background and shaped by experiences like her work with a women's NGO in Uganda, her academic journey took a pivotal turn upon discovering the EMES network.

EMES played a key role in facilitating Alejandra Millan Franco's research stay at the University of Coimbra, where she benefited from the insightful guidance of **Silvia Ferreira** in refining her research focus. Her participation in the 9<sup>th</sup> EMES International Research Conference in Frankfurt further strengthened her engagement, offering valuable opportunities to connect with leading scholars such as Marthe Nyssens and Benjamin Huybrechts, as well as with the dynamic EMES PhD community.



Our member **Violeta Bouzada**, a PhD student in Economic Analysis and Business Strategy at Universidade da Coruña (Galicia, Spain), is advancing her research on the role of social enterprises in the circular economy, under the supervision of Marta Rey-García. Since joining EMES in 2022 at the 8<sup>th</sup> EMES International Training School in Seville, Violeta has found invaluable support for her research. She continued her engagement at the 9<sup>th</sup> edition of the Training School in Trento (2024), fostering connections with researchers like Anaïs Perilleux (UC Louvain), whose work aligns closely with hers, especially on social enterprises in the textile sector. Inspired by this collaboration, Violeta will undertake a three-month predoctoral stay at UC Louvain to deepen her insights into social enterprises and just green transitions.



Her academic path continued with a research stay at the University of Zaragoza under **Millán Díaz-Foncea**, now her co-director, enriching both her empirical work and practical understanding of Spain's social economy. Alejandra also participated in the 2024 EMES Training School in Trento, which proved pivotal in consolidating key elements of her thesis. She's involved in an Erasmus+ project with CIRIEC España, crucial for her thesis and future career. For Alejandra, EMES has been more than an academic network—it's a compass guiding her research, fostering connections, and bridging the gap between scholarship and social impact. As she nears the completion of her PhD, she carries not only academic growth but the profound relationships and shared commitments that EMES has made possible.





# Governance

## New EMES Board Elected in 2023

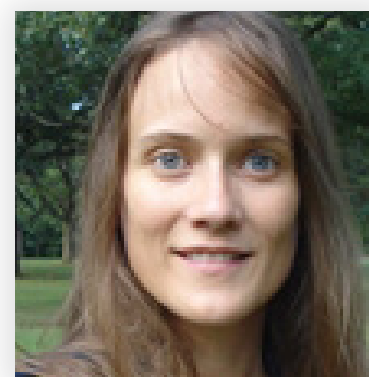
In 2023, EMES held elections for its Board, whose candidates were introduced during the General Assembly held in Frankfurt. Following a transparent voting process, the new Board members were elected, representing both institutional and individual members.



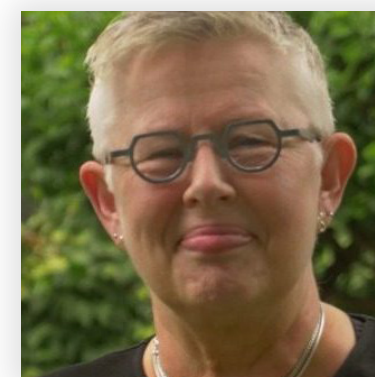
**CES (Belgium):**  
Frédéric Dufays



**CES (Portugal):**  
Sílvia Ferreira  
*Vice-President*



**CIRTES (Belgium):**  
Anaïs Perrilleux



**CSE (Denmark):**  
Linda Andersen



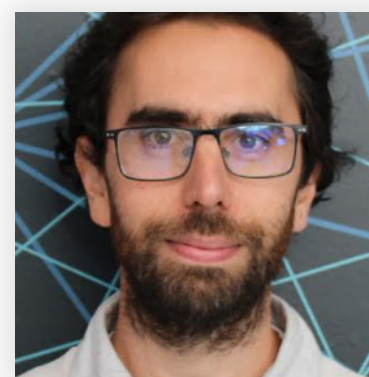
**Former President:**  
Taco Brandsen  
(The Netherlands)



**EURICSE (Italy):**  
Giulia Galera



**LEST (France):**  
Francesca Petrella  
*President*



**UCC (Ireland):**  
Lucas Olmedo



**SH (Sweden):**  
Malin Gawell



**PhD Representative:**  
Juliana Rodrigues  
(Finland /Brazil)

## Individual Member Representatives

Each new Board member brings extensive professional experience and expertise to their roles, enhancing EMES ability to consolidate, collaborate, and advance the SE field.



**Nicole Göler von Ravensburg (Germany)**



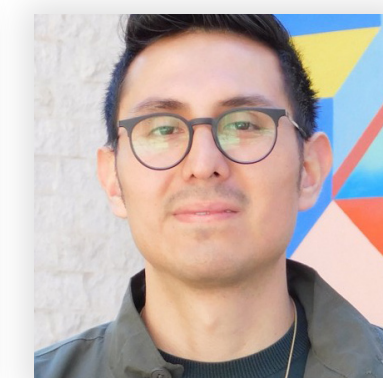
**Danijel Baturina (Croatia)**



**Kai Green (Denmark)**  
*Treasurer*



**Kerry Krige (United Kingdom)**  
*Secretary*



**Sergio Páramo Ortiz (The Netherlands/Mexico)**



# EMES Strategic Plan 2023–2025: Strengthening Collaboration

In 2023 and 2024, the EMES International Research Network held annual strategic retreats, looking at current and future challenges to SE but also to research and researchers. Taking account of financial constraints and changing academic situations, potential strategic options were examined based on the unique strengths of EMES. The core objective remains the best possible support to collaborative learning experiences in the network.



The EMES Strategic Plan 2023–2025 underscores the network's commitment to supporting its members and advancing SE field research. By focusing on sustainability, collaboration, and engagement, EMES aims to strengthen its identity and relevance while empowering the next generation of scholars.



# General Assembly 2023/24

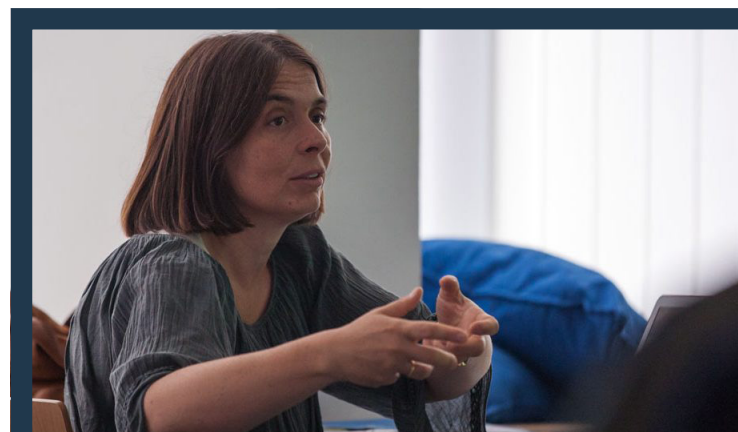


EMES held two General Assemblies between June 2023 and May 2024, marking key moments in the network's governance and strategic development.

The first Assembly took place online in June 2023, followed by an in-person meeting in Frankfurt that gathered 54 members, Board representatives, and Coordination Unit staff. These events provided valuable platforms to review EMES's ongoing initiatives, introduce strategic directions, and strengthen collaboration among members. Then-President Taco Brandsen opened the meeting with a warm welcome, highlighting the upcoming Board transition and the conclusion of the elections on October 1st. A key highlight of the session was the presentation of the EMES Strategic Plan 2023–2025,

which outlined the network's priorities in research, consolidation, and engagement. The agenda and minutes were unanimously approved, reflecting the membership's strong commitment to EMES's collective vision.

The 2024 Assembly was held in June 2024. President Francesca Petrella opened the session with a welcome and acknowledgement of new members. The agenda and the minutes from the two extraordinary assemblies held in Frankfurt (September 2023) and online (February 2024) were approved. Rocío Nogales-Muriel and Tamara Bilbija presented a comprehensive overview of EMES's activities in 2023, while Nicole Göler von Ravensburg and Kai Green introduced the financial results from 2023 and presented the 2024 budget overview. The Assembly reaffirmed EMES's commitment to transparency, democratic governance, and continuous development of the network.



**Francesca Petrella,**  
**new president of the**  
**EMES Board of Directors!**  
You can check out the full interview [HERE](#)

# Communication

EMES values the power of direct and honest communication to foster active member participation and meaningful exchanges with other communities.

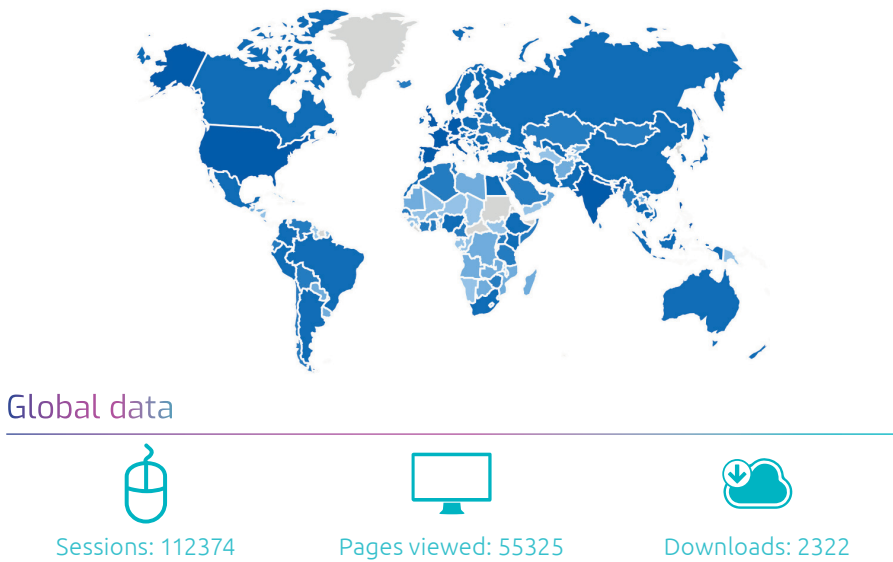
EMES uses several digital platforms to enhance internal communication within the organization. Its website serves as the primary source of information, complemented by a blog, social media channels, and monthly news alerts.

## EMES website data (2024)

The website attracted 23,538 users from 190 countries.

### Visits by Country

United States	13,02%
India	8,11%
Italy	5%
United Kingdom	4,57%
Spain	4,07%
Germany	3,78%
Belgium	3,23%
Philippines	3,18%
France	3,15%
China	2,45%



## Blog&News (2023-2024)



Dive into the **EMES Blog** and **News** section for in-depth articles, updates, and stories showcasing the latest developments and research in the SE field

413  
Post published

## Monthly News Alerts (2023-2024)



Stay informed with the **EMES Monthly News Alerts**, your go-to source for the latest updates, events, and insights from the EMES Network and the SE community.

22  
monthly news alerts sent

## Social networks (2023-2024)



### Facebook

Our **Facebook** community is growing steadily, with an increasing number of followers and active engagement from around the world. It's a vibrant space where we share updates, news, and insights about the EMES Network and the SE field. Stay connected and join the conversation by following us: **@emesnetwork**

3,366  
Page likes

1.9K  
Content interactions



### YouTube

Explore our **YouTube** channel for insightful videos, conference highlights, webinars, and interviews with leading experts in field. Subscribe to stay updated and dive into the world of SE research with EMES!

169  
subscribers

110  
videos



### LinkedIn

Connect with us on **LinkedIn**, the professional hub for the EMES Network! Follow our page to stay updated on the latest research, events, and opportunities in the field. Join the conversation and engage with a international community of scholars, practitioners, and policymakers.

1,904  
page views

975  
new followers

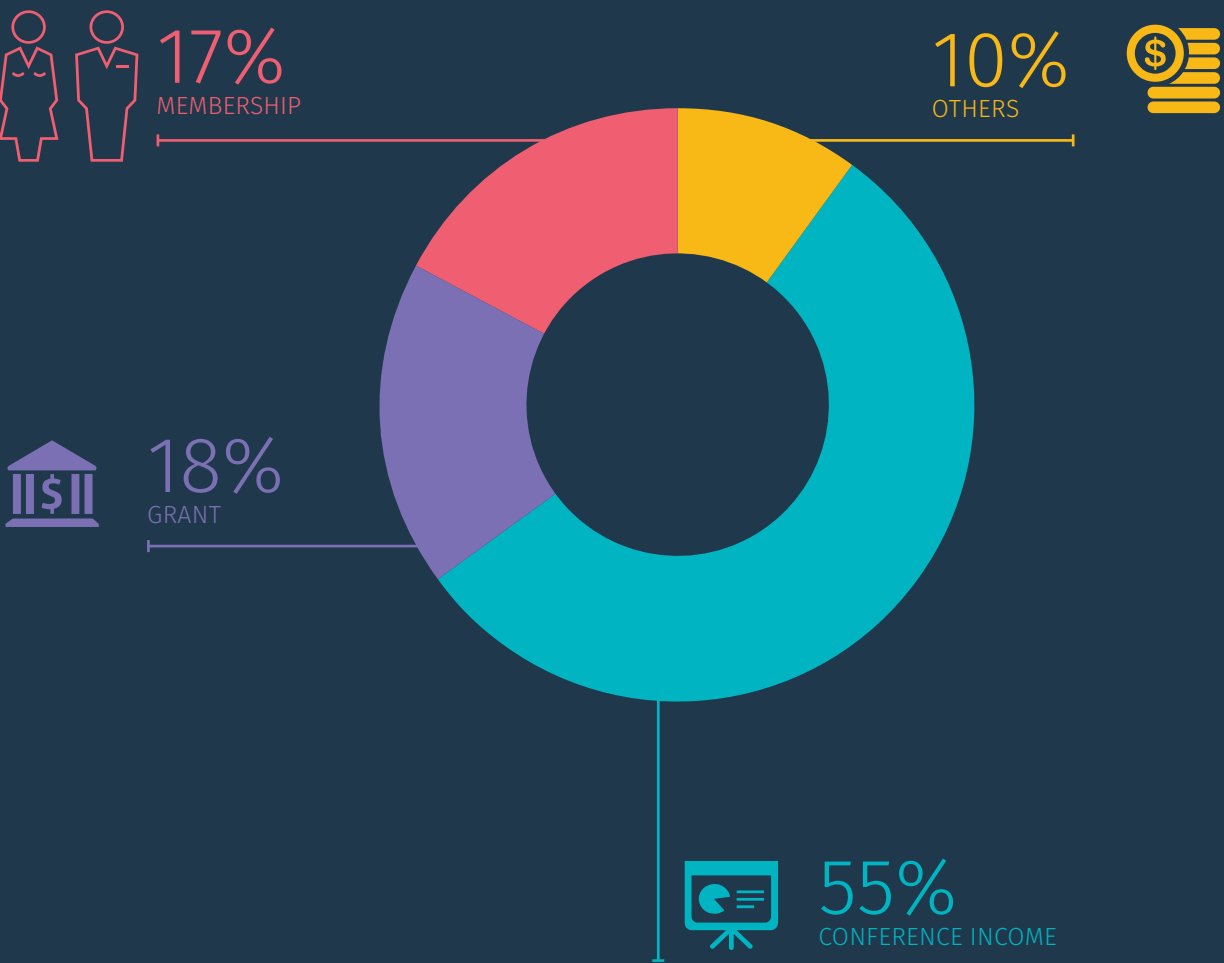


# Financial Overview

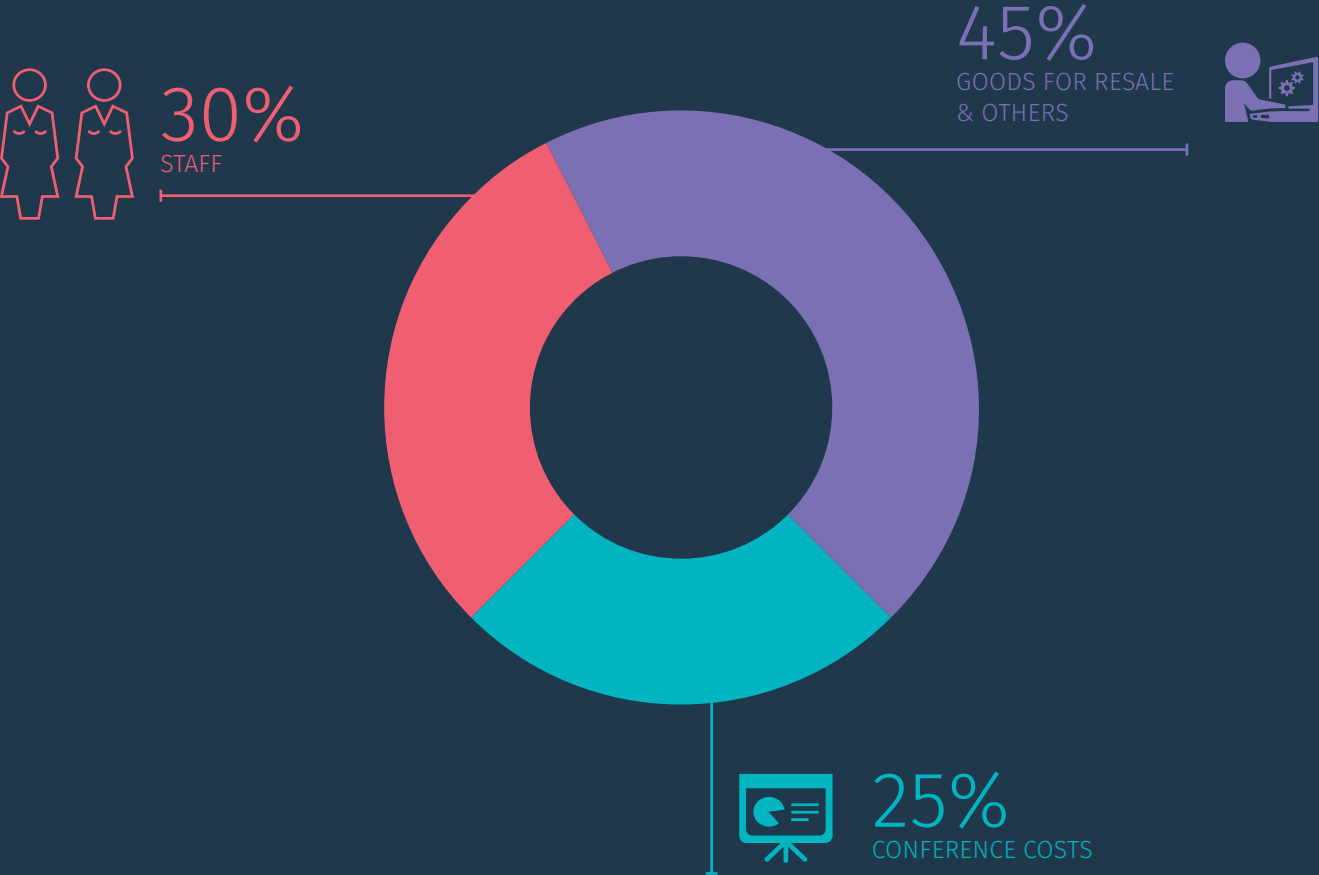
During the 2023/24 period, EMES maintained a stable financial position, ensuring the sustainability of its core activities while supporting the expansion of new initiatives.

The financial mid-term outlook remains stable and aligned with EMES’s long-term mission of fostering international collaboration and knowledge exchange in the SE field. However, securing the long-term financial stability of the EMES Coordination Unit remains a challenge.

## 2023 Incomes



## 2023 Expenses

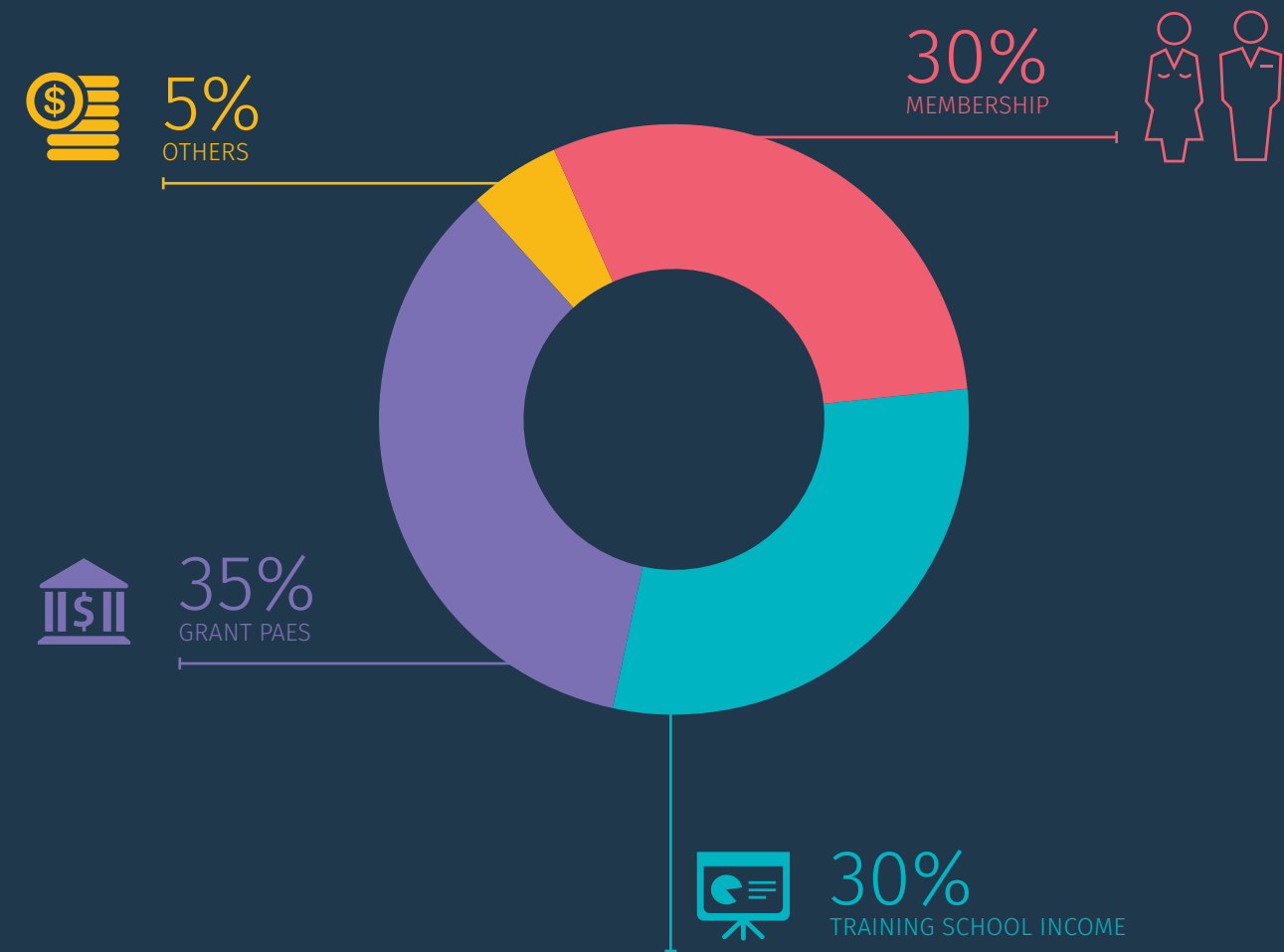


# Financial Overview

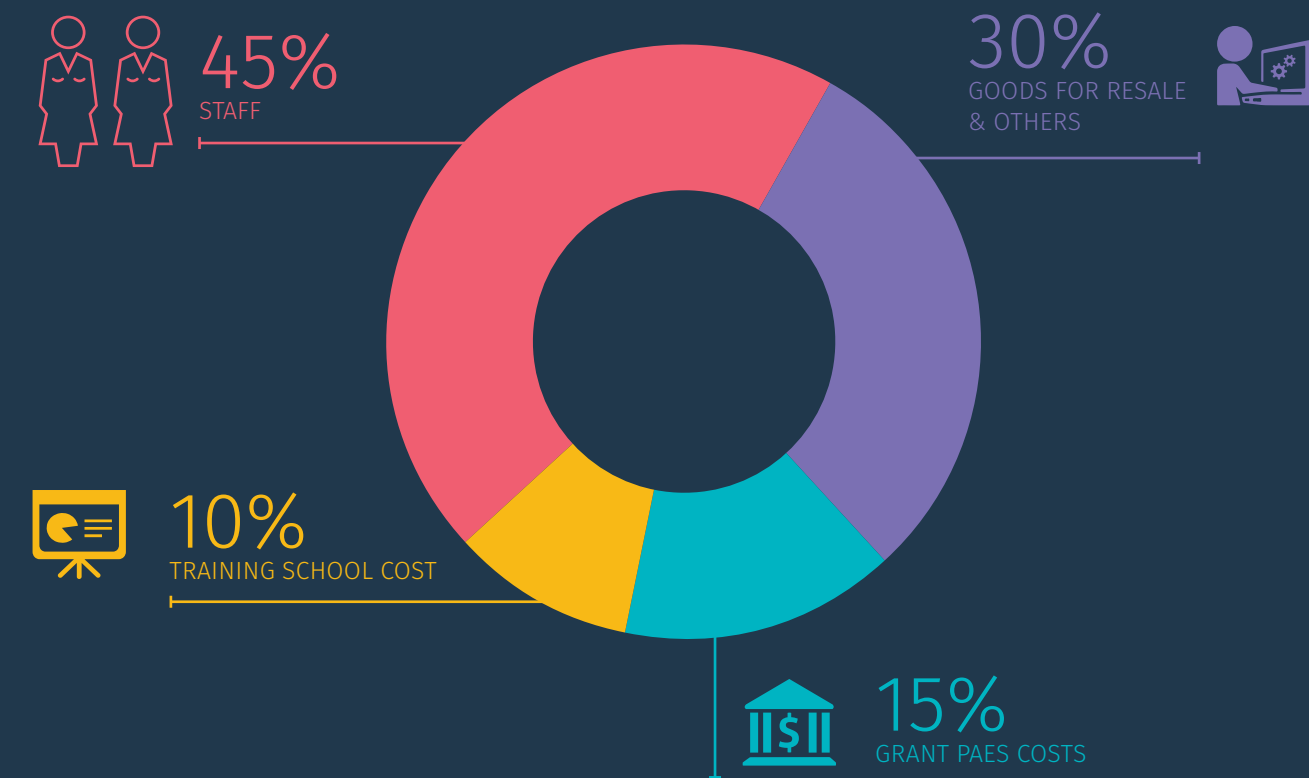
The income comes from a variety of sources, each playing a unique role in contributing to the EMES mission. These diverse income streams ensure the organization’s ability to fund its programs and maintain stability, highlighting the importance of both regular contributions and special funding opportunities.

The spending is largely driven by subcontractor services and contributions to hosts and event-related expenses, which are critical for organizing and supporting various activities. The total spending is heavily influenced by these recurring operational and event-related costs, as well as the necessary investments to maintain services and ensure functioning.

## 2024 Incomes



## 2024 Expenses





# Next gatherings & goals for 2025

Information  
visit here

We look forward to welcoming you to the  
**10<sup>th</sup> EMES International Conference**  
in Rotterdam and Utrecht in late autumn 2025!



## Important Dates

Launch of conference call	26 <sup>th</sup> November 2024
Opening abstract submission	27 <sup>th</sup> January 2025
Submission of abstracts deadline	21 <sup>st</sup> April 2025
Opening conference registration	14 <sup>th</sup> April 2025
Notifications to authors	19 <sup>th</sup> May 2025
Deadline early bird registration for presenters and non-presenters	5 <sup>th</sup> June 2025
Submission of practitioners' contributions	17 <sup>th</sup> June 2025
Deadline for presenters' registration	30 <sup>th</sup> June 2025
Full paper submission (for award)	30 <sup>th</sup> June 2025
Notification to practitioners	19 <sup>th</sup> July 2025
Program publication	15 <sup>th</sup> September 2025
Deadline for registration for non-presenters	6 <sup>th</sup> October 2025
Conference opening	3 <sup>rd</sup> November 2025
Full paper submission (for post-conference publication)	12 <sup>th</sup> January 2026

